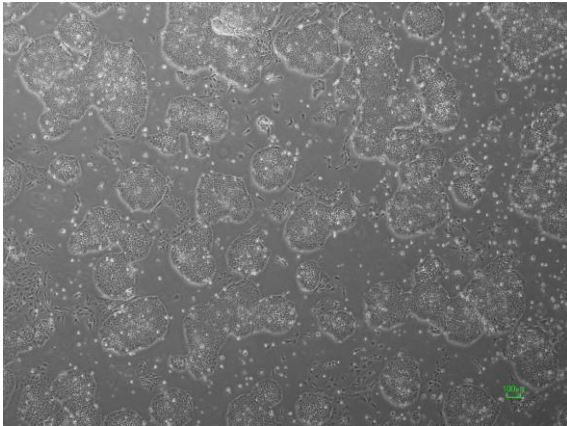
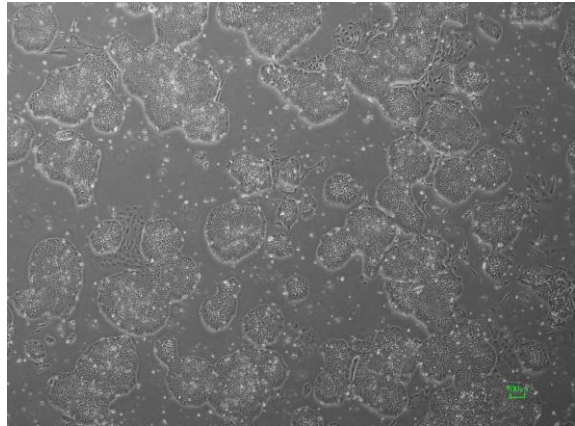


## 【 CiRA-jk-0050 】 Morphology of iPSC colonies

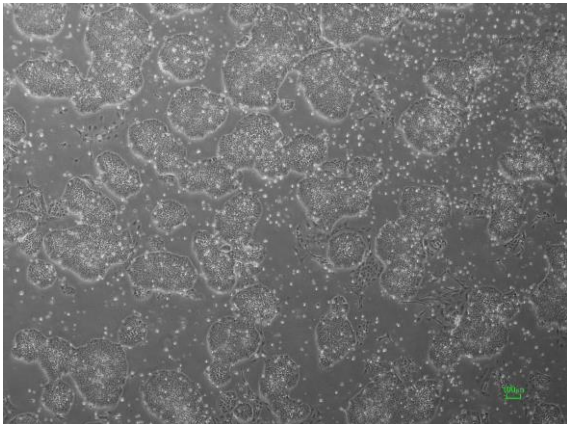
CiRA -jk-0050-A: passage-2



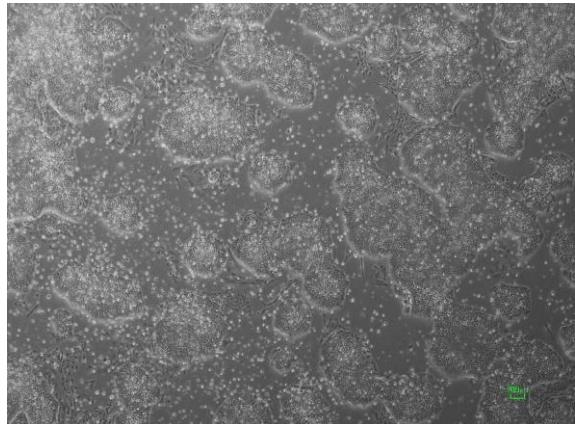
CiRA -jk-0050-B: passage-2



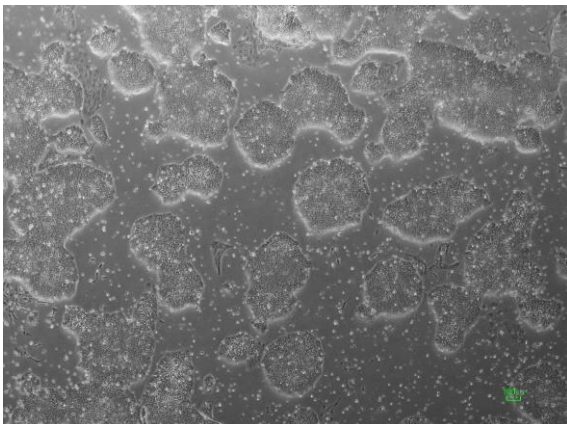
CiRA -jk-0050-C: passage-2



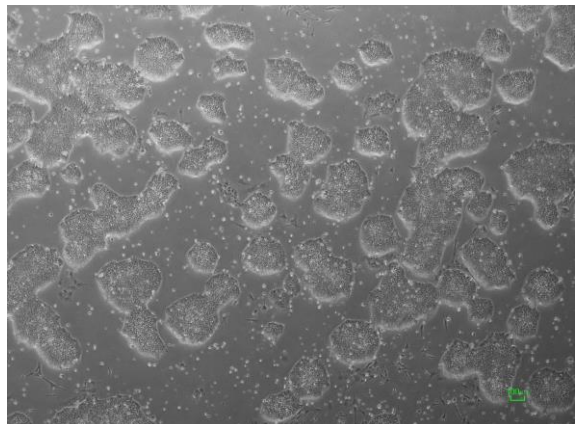
CiRA -jk-0050-D: passage-2



CiRA -jk-0050-E: passage-2



CiRA -jk-0050-F: passage-2



( All images were captured at 4x magnification )